



Family Entertainment



Manatu





Manatu

Spectacular Visual Effects that captivate the whole family

Mathias and Laura Mickler, both around 40, have two teenage children, Ron and Nikki, as well as little Betty. For Laura's birthday her brother-in-law Mark, an enigmatic character who has been living on a remote island near New Zealand for ages, sends her an ancient board game.

Nobody seems much interested in the boring-looking game, Manatu, but the Micklers finally sit down to try it - and discover that it is a fantastic, multimedia experience complete with holograms. Great entertainment!

Until the game asks Laura a question and, to avoid embarrassment, she lies.

And this is the turning point; from now on it emerges that the game has a mind of its own.

Manatu not only reveals to everyone that Laura has lied but also seems to know her secrets. And when everyone decides they don't want to play any more, Manatu makes life impossible for them until they sit down to play again: doors throughout the house won't open, mobiles won't work, anyone venturing outside almost drowns in a tropical storm...

So the Micklers sit down to play Manatu again - and the drama escalates. The game turns out to have enormous powers. Next time someone lies

everyone is punished: a black hole opens up at their feet, and they find themselves in a terrifying parallel world - with very real dangers! Luckily Ron works out that teamwork can get them through this danger, and they manage to get back to their home.

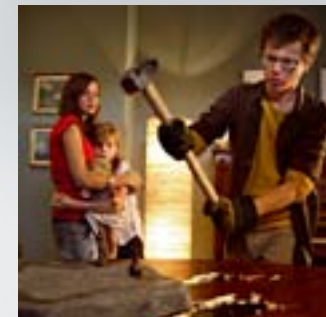
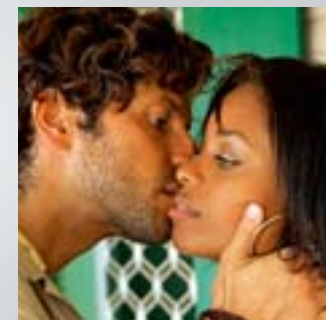
But there is no stopping the game now. And though the Micklers accept that they have to tell the truth and work together, it's so hard to do so! In a thrilling and truly spectacular final encounter with the game it emerges that the only way the Micklers can survive (and escape from the deadly parallel universe where the game sends





Manatu

them) is to work together as a family... to be a family for perhaps the first time. Brother-in-law Mark, who realized to his horror that the ancient game he sent in good faith is only intended for ancient communities where the family is strong and unified, turns up to help, and in an exciting finale the Micklers learn to abandon the inconsiderate, selfish behaviour that has always been normal for them.



Manatu

Family Entertainment

Movie, 1 x 90'

Directed by Edzard Onneken

Starring Markus Knüfken, Susanna Simon, Stefan Miess, Emilia Schüle

Produced by Hofmann & Voges Entertainment GmbH for Sat.1 in association with SevenOne International

All rights reserved © SevenOne International - Credits not contractual - Different territories

www.sevenoneinternational.com - info@sevenoneinternational.com